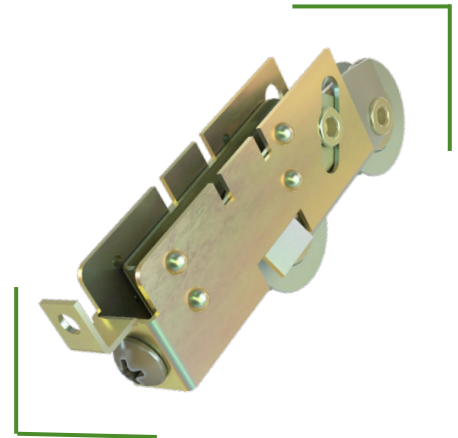


## End Adjust 1935

### Rollers

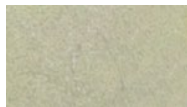
With the broadest line of patio door roller solutions in the industry, our precision grade bearings are of the best quality in the industry and are a perfect solution for today's heavy panels.



### AVAILABLE COLORS



Stainless  
Steel



Steel



### PRODUCT HIGHLIGHTS

- Housing material = mild steel, stainless steel
- Housing width options = flare & dimple tab options = A, B1, C, E & F
- Bearing materials = mild steel, stainless steel, nylon bearing performance
- Standard & precision bearing diameters - 1.000", 1.120", 1.250", 1.430" & 1.500"
- Adjustment = 0.450"